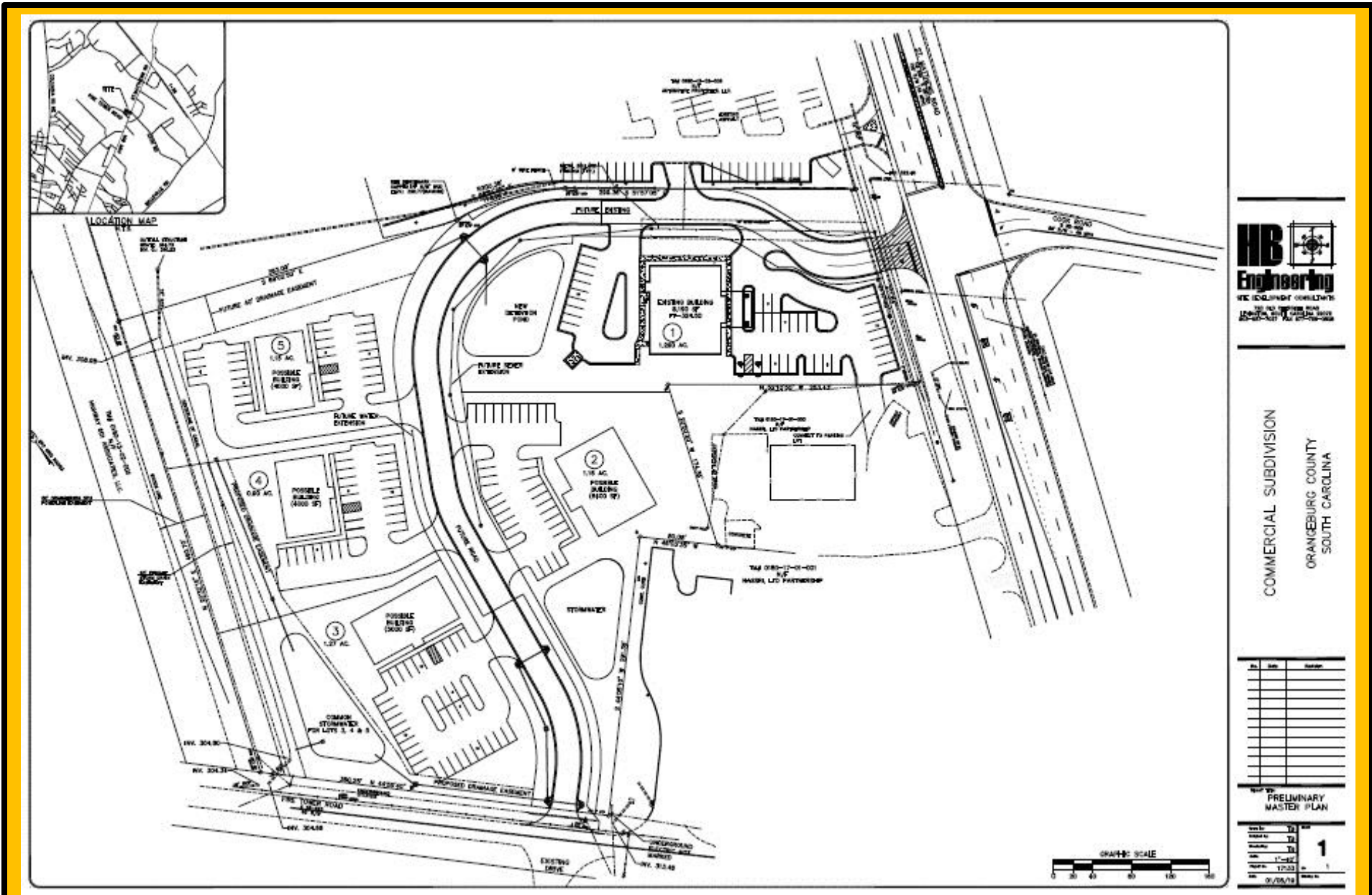


Sites Available on Hwy 601 North for Medical or General Office Use

- ~ Strategically Located at Exit 145-A off I-26 in Orangeburg, SC on Hwy 601 – Behind South Carolina Surgical
- ~ Located Across from the Regional Medical Center & O-C Technical College w/Excellent Access @ a Signalized Traffic Light
- ~ Only 35 Miles from Columbia & 70 Miles from Charleston.
- ~ Interchange Enhancement Project Underway
- ~ City Utilities Available
- ~ Paved Street & Access/Use of Storm Water Pond will be Provided



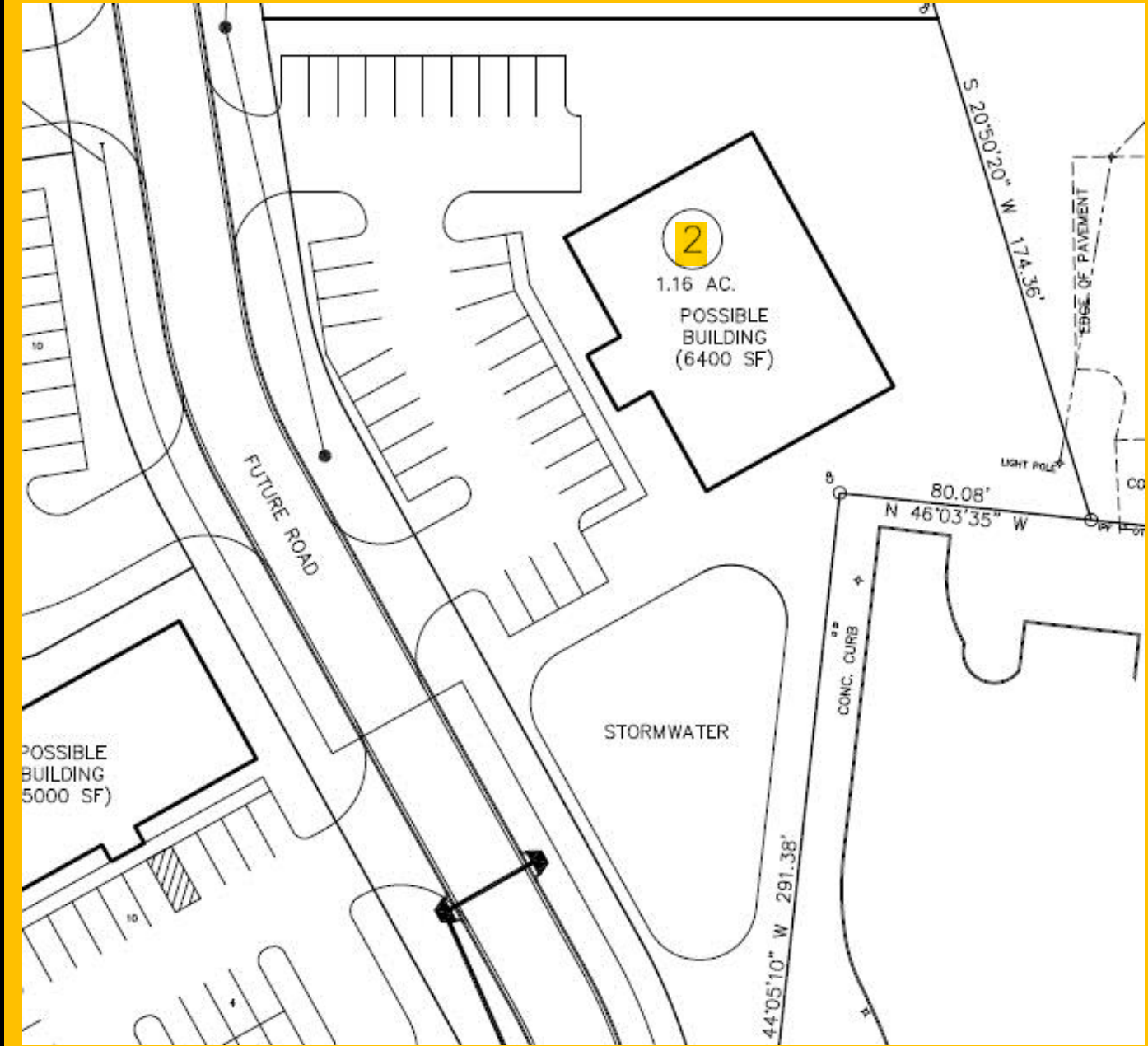
R. Cal Bruner, Jr. ~ Century 21 The Moore Group
 803-535-6208 – Direct ~ 803-614-7018 – Cell
www.calbruner.com



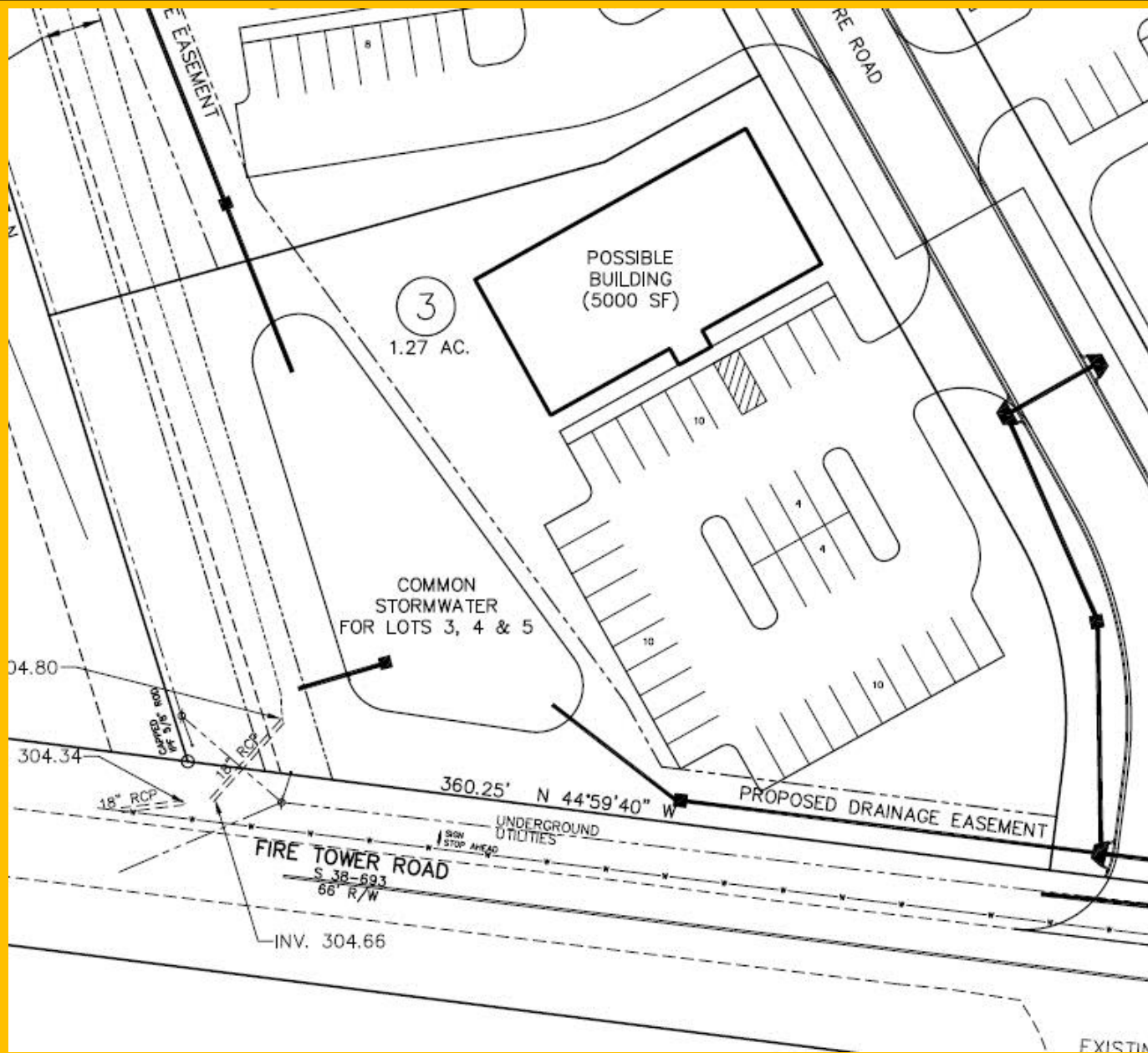
Available Acreage & Pricing

- Lot # 2: 1.16 Acres @ \$290,000
- Lot # 3: 1.27 Acres @ \$317,500
- Lot # 4: 0.90 Acres @ \$225,000
- Lot # 5: 1.15 Acres @ \$287,500

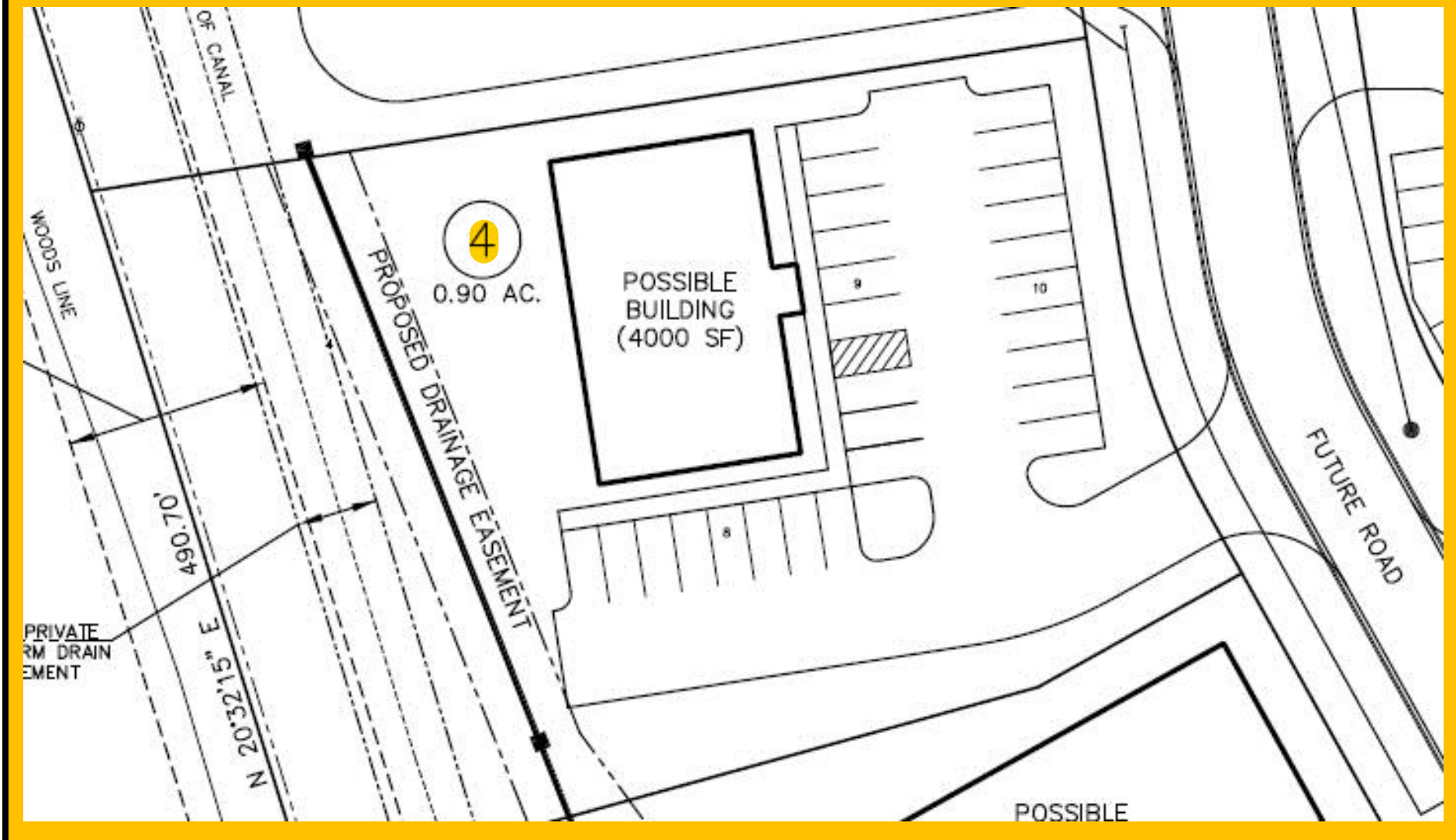
Lot # 2: 1.16 Acres @ \$290,000



Lot # 3: 1.27 Acres @ \$317,500



Lot # 4: 0.90 Acres @ \$225,000



Lot # 5: 1.15 Acres @ \$287,500

